



# ALL STAR CHARTS

**India Monthly Candlesticks Review (08-04-2020)**

## **Disclaimer:**

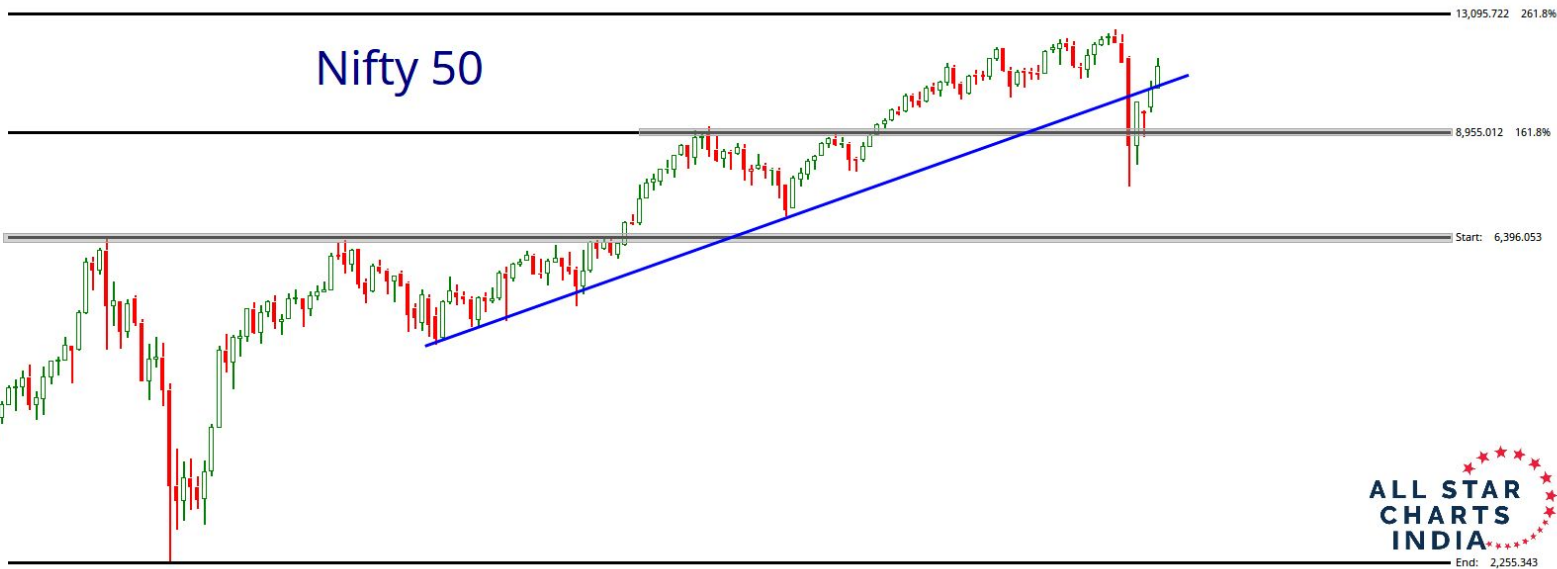
The information, opinions, and other materials contained in this presentation is the property of Allstarcharts Holdings, LLC and may not be reproduced in any way, in whole or in part, without express authorization of the copyright holder in writing. The statements and statistics contained herein have been prepared by Allstarcharts Holdings, LLC based on information from sources considered to be reliable. We make no representation or warranty, express, or implied, as to its accuracy or completeness. This publication is for the information of investors and business persons and does not constitute an offer to sell or a solicitation to buy securities.

This document may include estimates, projections and other “forward-looking” statements, due to numerous factors, actual events may differ substantially from those presented. Opinions and estimates offered herein constitute Allstarcharts Holdings, LLC’s judgment and are subject to change without notice, as are statements of financial market trends which are based on current market conditions

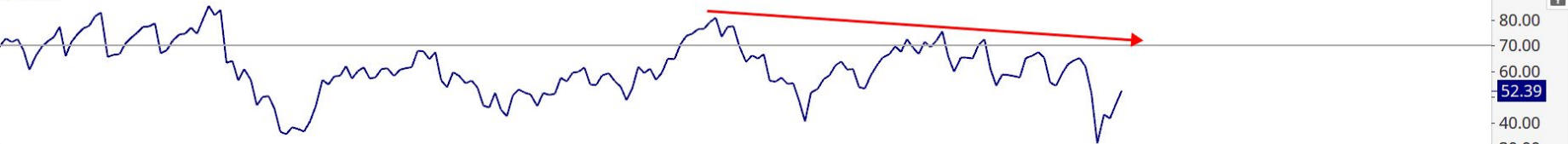
Any investment is subject to loss of capital and is only appropriate for persons who can bear that risk and the nature of an investment. Any comments or statements made herein do not necessarily reflect those of Allstarcharts Holdings, LLC or its affiliates (collectively, "Allstarcharts") and do not constitute investment advice. These materials are not intended to constitute legal, tax, or accounting advice or investment recommendations. Prospective investors should consult their own advisors regarding such matters.

See full terms and conditions: <http://allstarcharts.com/terms/>

# Nifty 50



14 Period RSI



Didn't Hit Oversold Conditions

# Nifty Mid-Cap 100



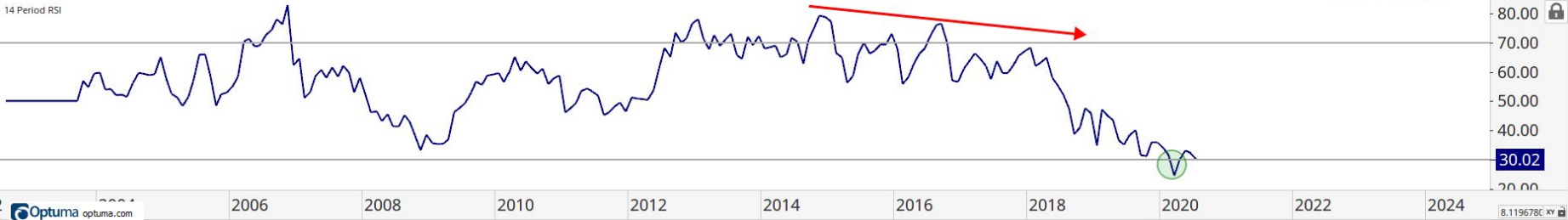
# Nifty Small-Cap 100



# Zee Entertainment



14 Period RSI





# Nifty IT

16,500

30,084.471 423.6%

18,998.022 261.8%

12,146.075 161.8%

Start: 7,911.572

End: 1,059.626



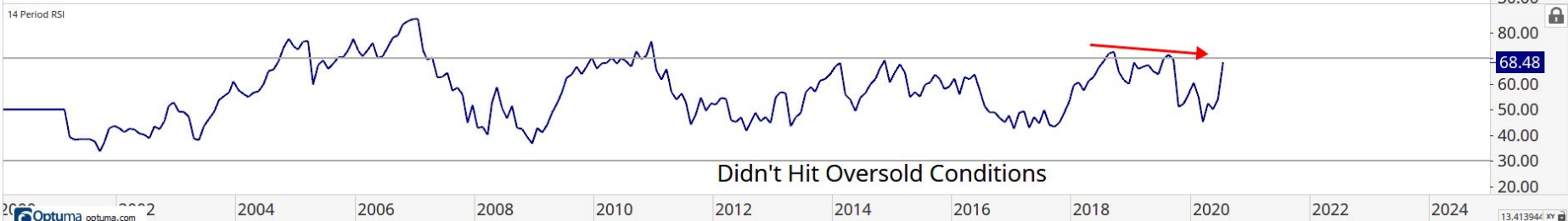
14 Period RSI

Didn't Hit Oversold Conditions

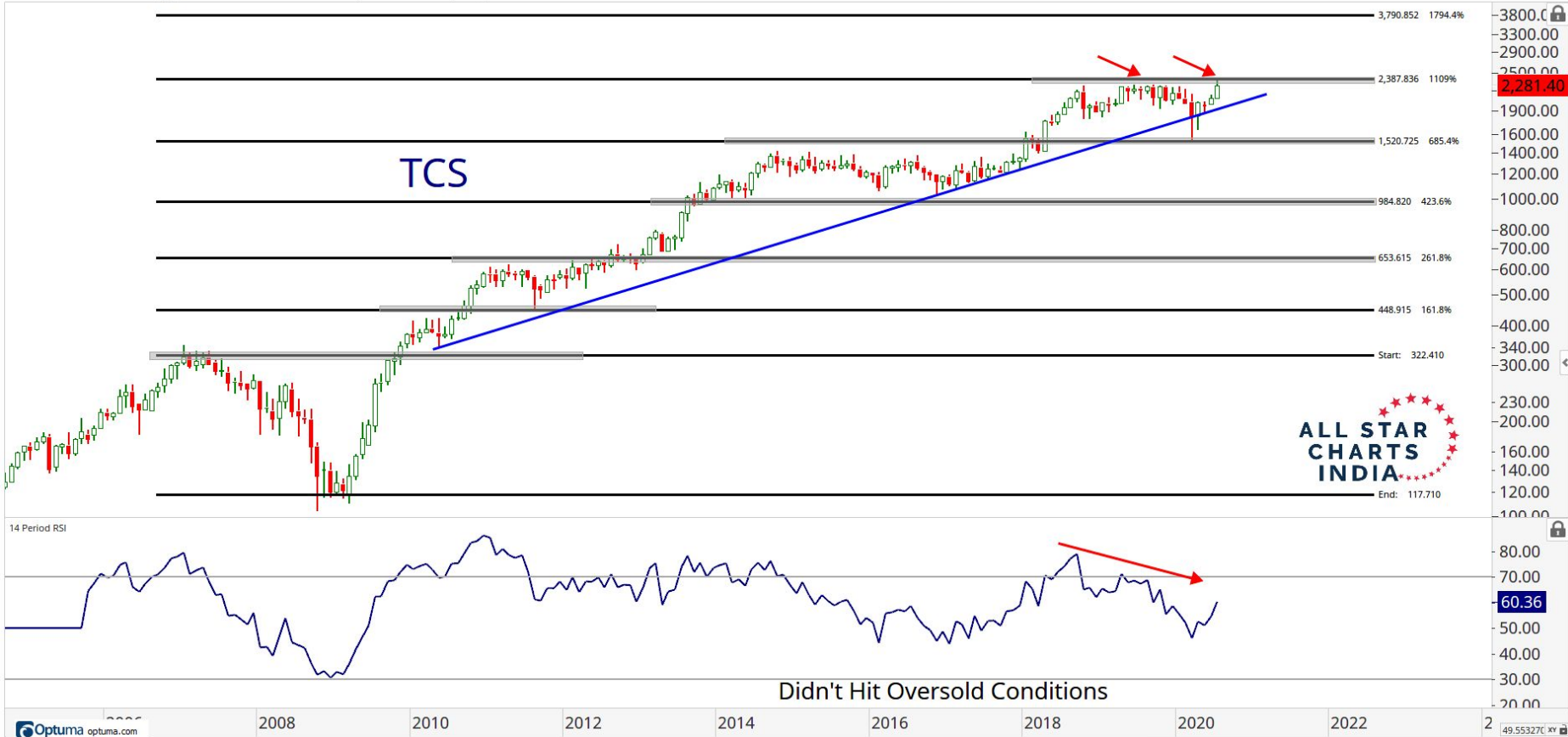
32,700  
29,000  
25,000  
22,000  
18,071.85  
16,000  
14,000  
12,000  
10,000  
8,000  
7,000  
6,000  
5,000  
4,000  
3,400  
3,000  
2,600  
2,300  
2,000  
1,600  
1,400  
1,200  
1,000  
90.00  
80.00  
70.00  
65.02  
60.00  
50.00  
40.00  
30.00  
20.00

2000 2002 2004 2006 2008 2010 2012 2014 2016 2018 2020 2022 2024 2026

# Infosys Ltd.

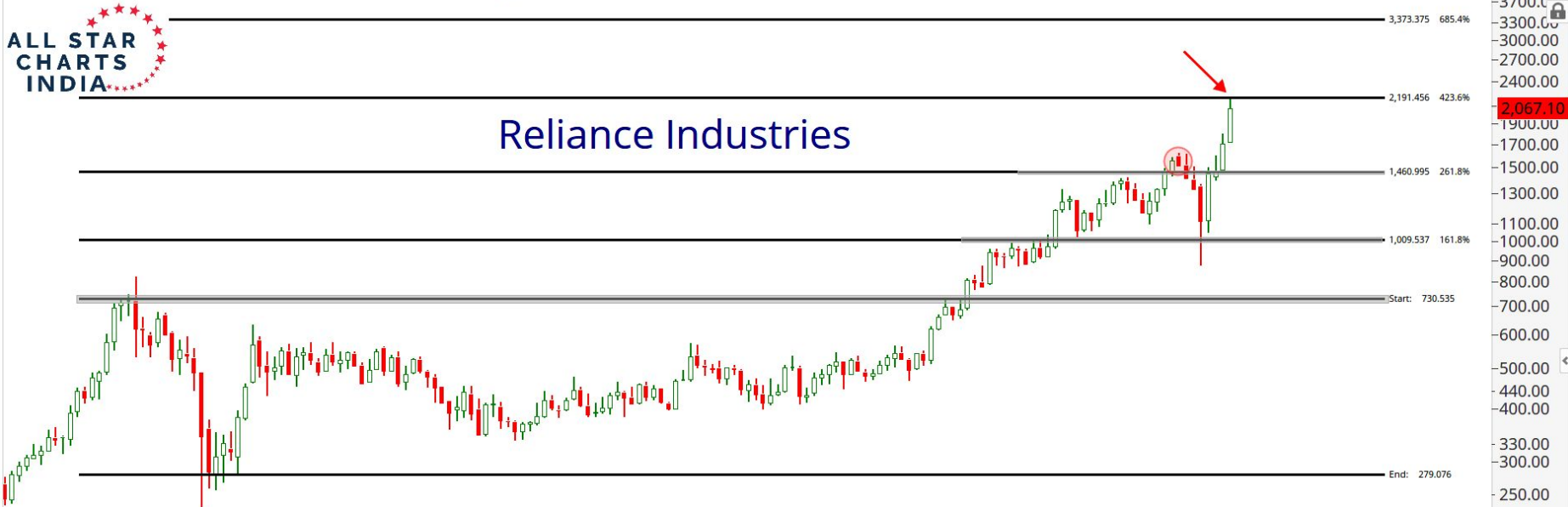






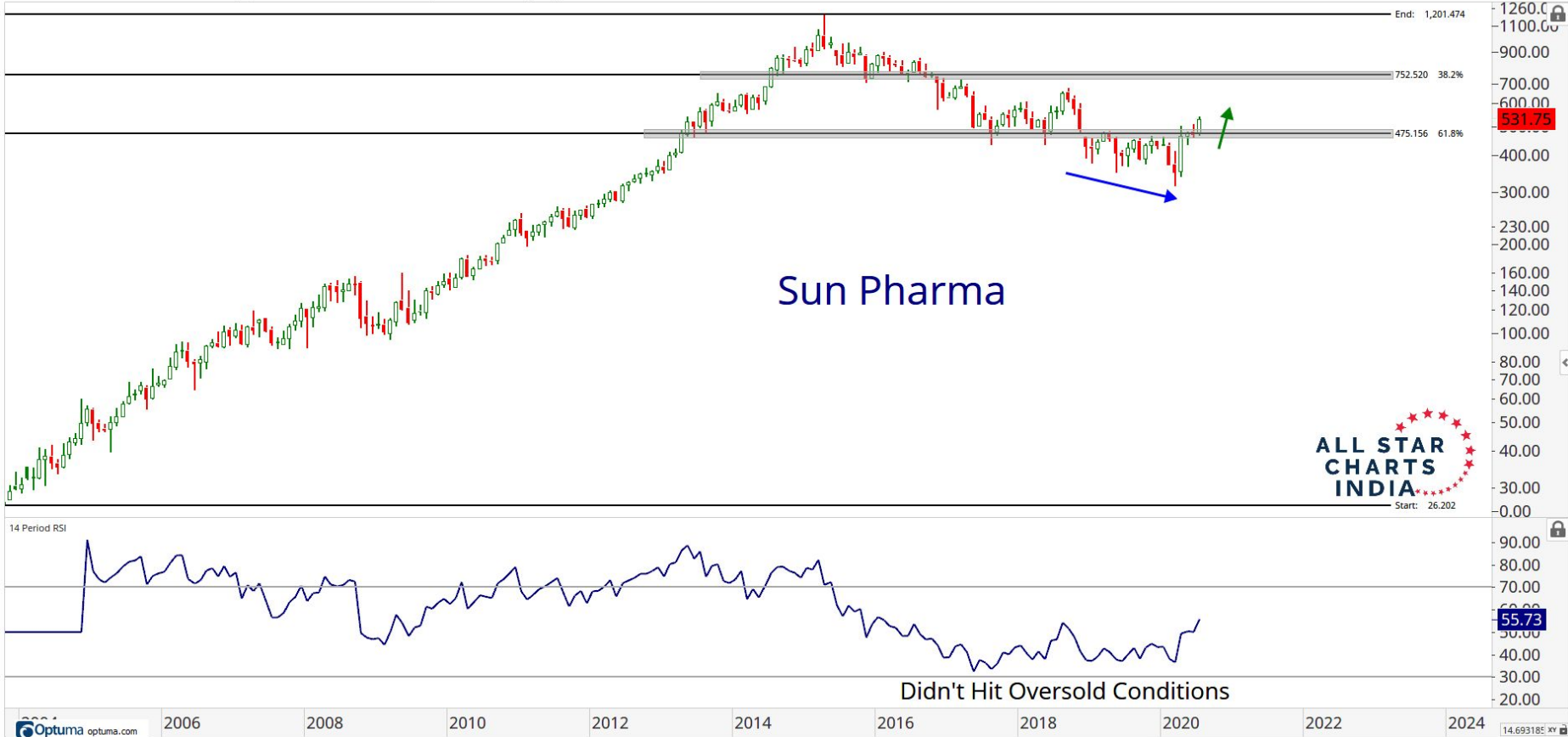


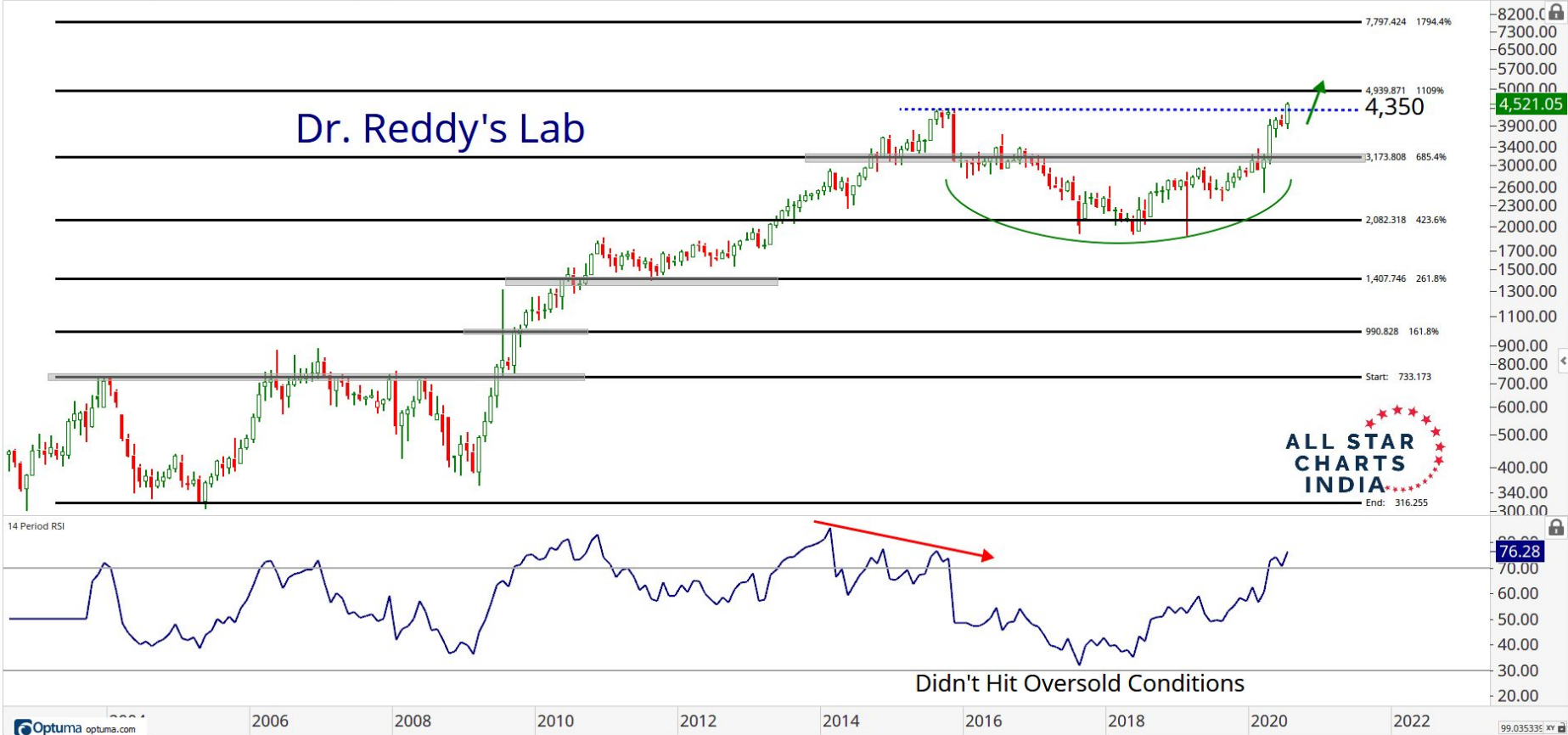
# Reliance Industries



Didn't Hit Oversold Conditions

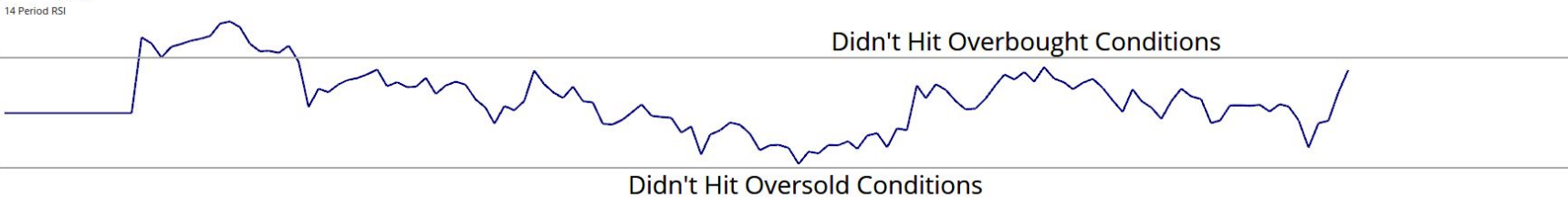
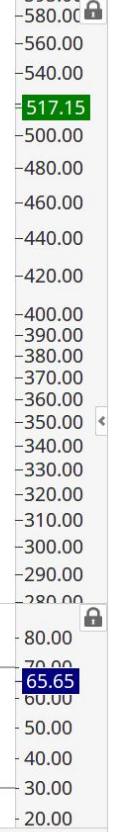
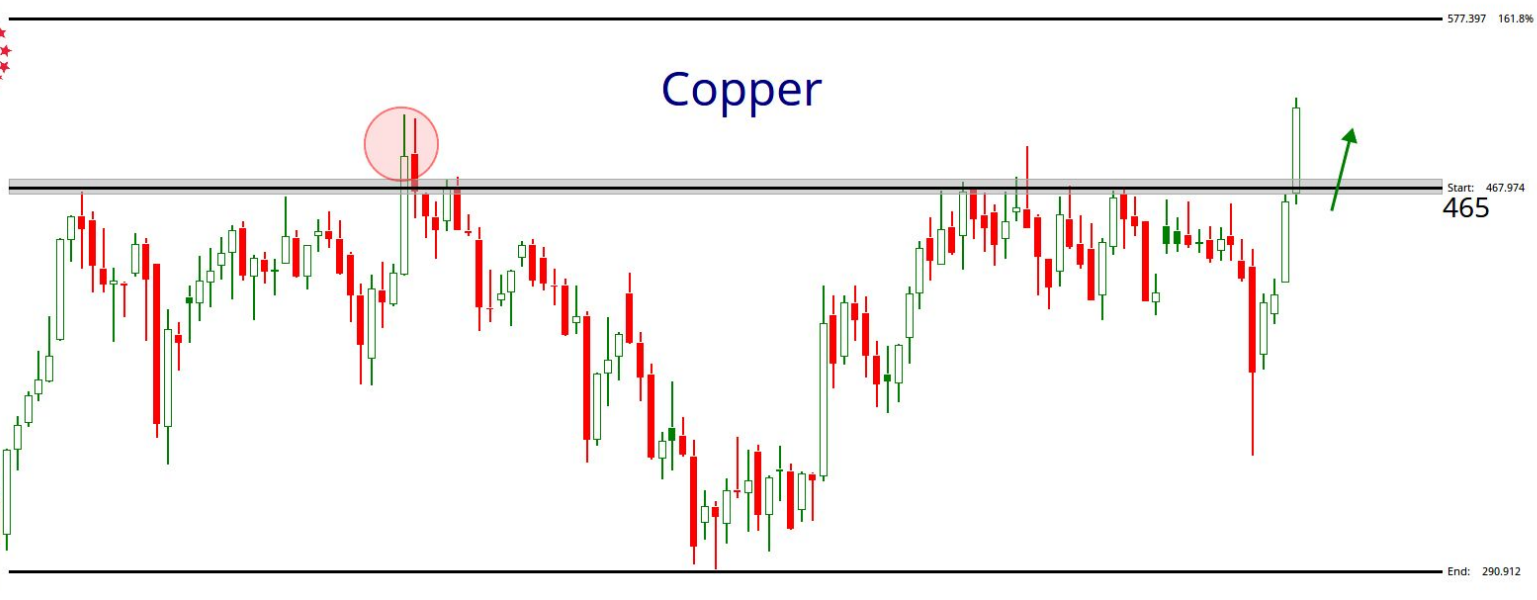








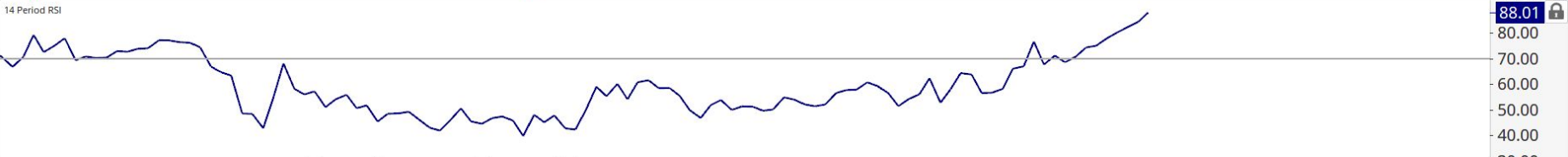
# Copper







# Gold



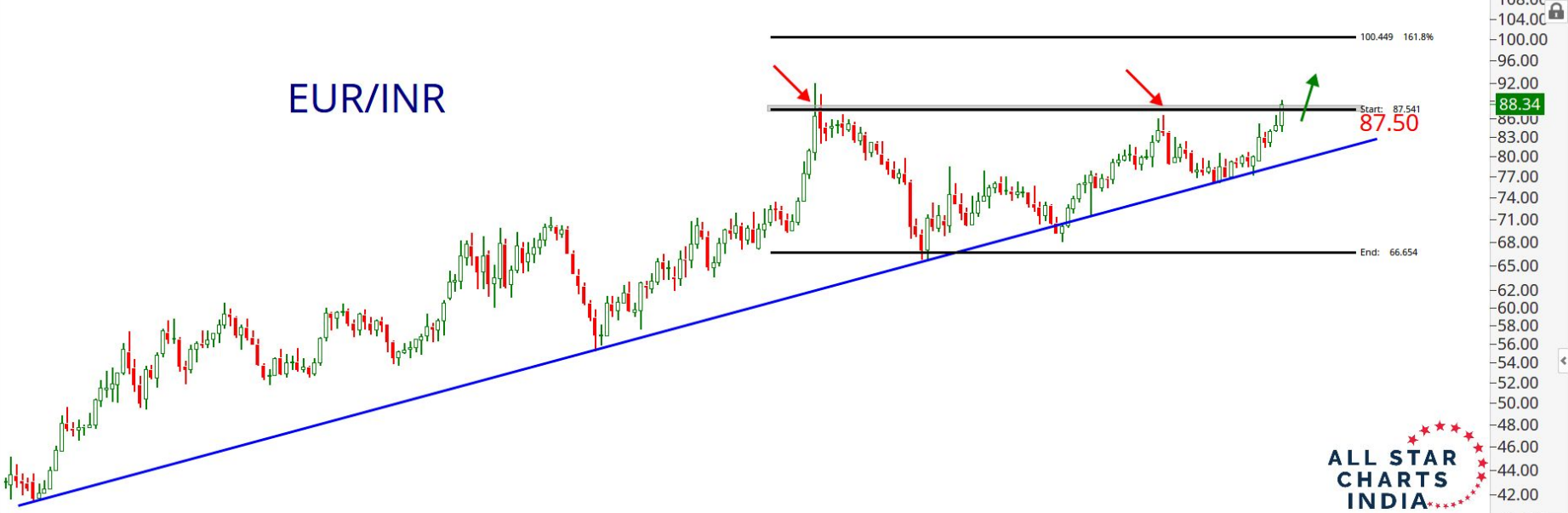
Didn't Hit Oversold Conditions



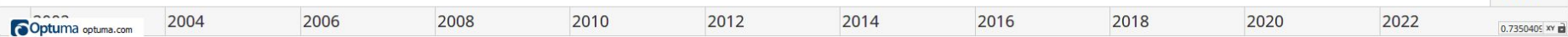


Didn't Hit Oversold Conditions

# EUR/INR



Didn't Hit Oversold Conditions



[allstarcharts.com/chartbook-india](https://allstarcharts.com/chartbook-india)

[allstarcharts.com/premium-contact-india](https://allstarcharts.com/premium-contact-india)